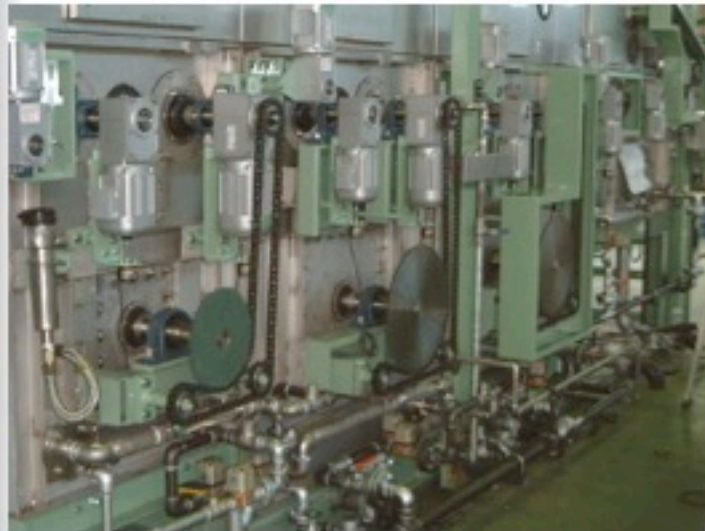


HANAYAMAKOGYO CO.,LTD

HIGH Quality

Dram type



Main Specification

- Roll width:2500~3000mm
- Machine Speed: Up to 40m/min
- Used speed pre-set: 20 pattern.
- Cloth capacity : 19.2m

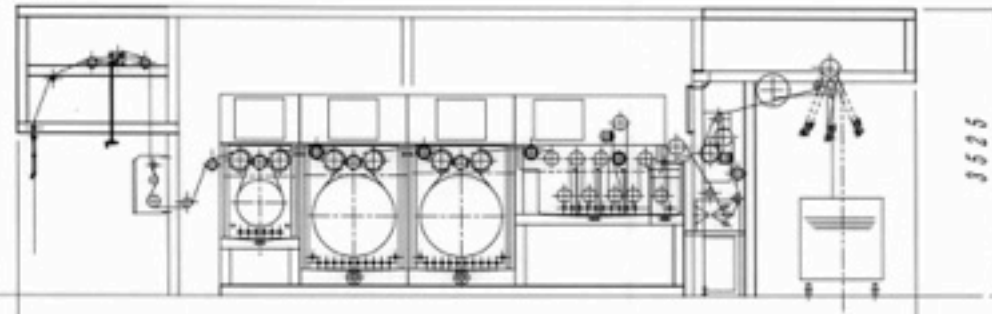
Energy Consumptions

- Water :10ton
- Water(Running) : 2~5ton/H
- Electric : 37kw/H
- Steam : 5kg-cmG

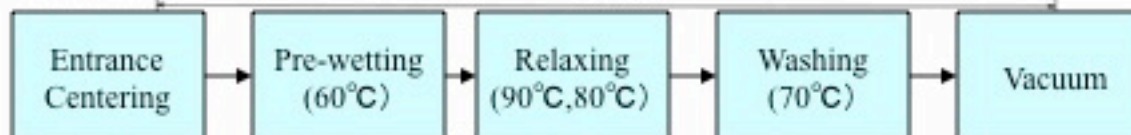
FEATURES

The cloth is guided with a overfeed roll and sinked with big drum into temperature controlled liquid. The cloth is relaxed in stage with shock less temperature changing. Drive units are controlled with digital speed control system based on cloth shrinking data that tested laboratory.

Model : 3DX



Process sheet



Operating display